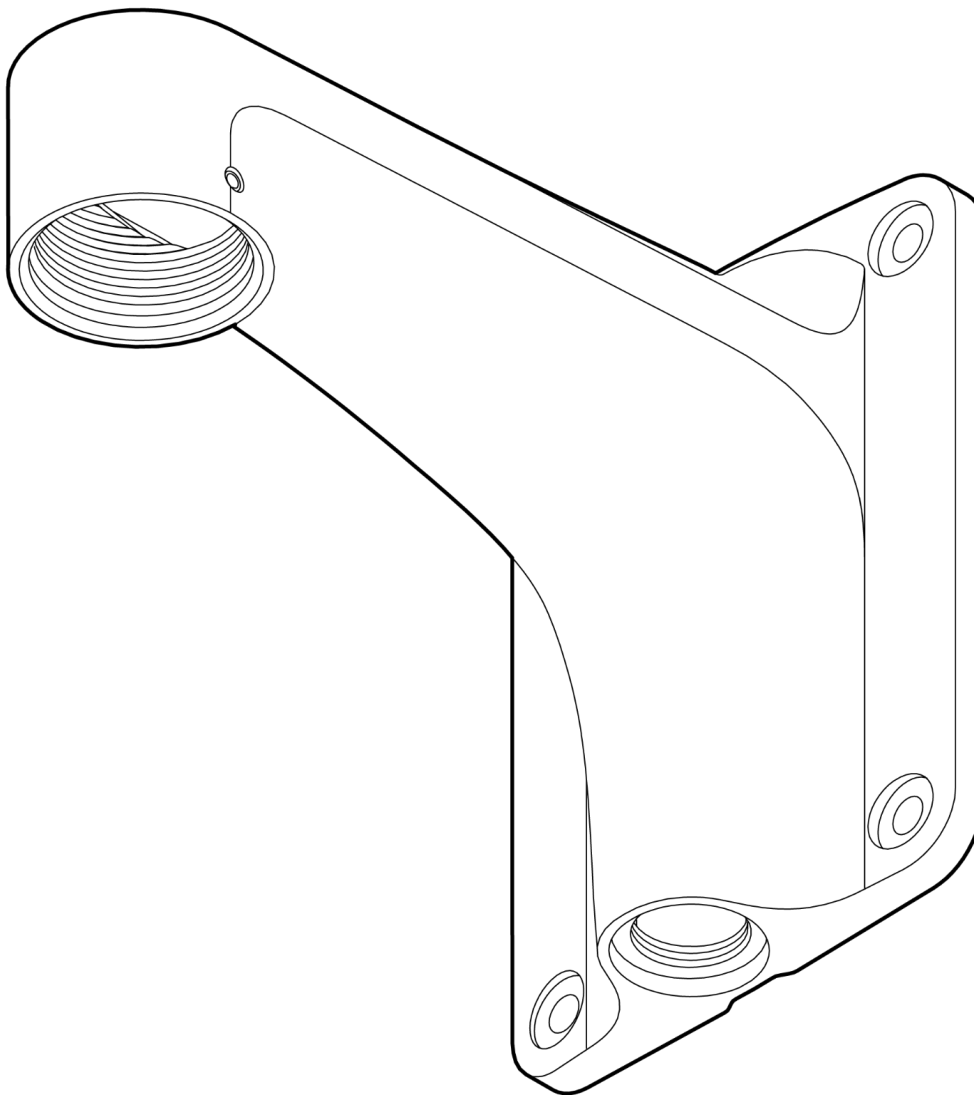


ACC-MNT-XLARM-1

Large Arm Mount



What's in the box



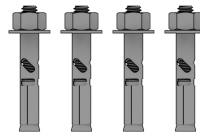
ACC-MNT-XLARM-1



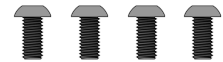
Closure Plug (1 pcs)
(Attached to mount)



Hex keys (2 pcs)
3mm and 5mm



1/4"-20 Sleeve Anchors (4 pcs)
Length: 2-3/4" Drill Size: 5/16"



M8 Machine Screws (4 pcs)
Length: 20mm Drive: 5mm hex

What you'll need

- A compatible Verkada product
- A hammer drill
- A 5/16" masonry drill bit
- A 7/16" or adjustable wrench
- A 1/2" (12.7mm) drill bit, or larger, for routing cable through wall

Compatible products

For a list of compatible products, please visit:

<https://docs.verkada.com/docs/accessories-overview.pdf>



Wiring

Wiring through a wall

Drill a ¼" hole for the Ethernet cable to feed through.

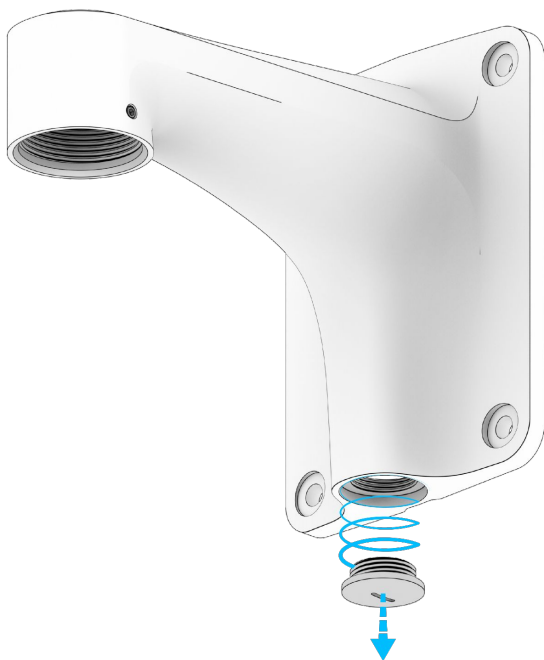
The mount can accept cable entry through the back.

Wiring through the opening

If wiring through the ¾" NPT* opening at the base, remove the closure plug.

*(USA) National pipe taper

Attach a standard ¾" NPT conduit fitting.



Mounting

For Concrete or Masonry

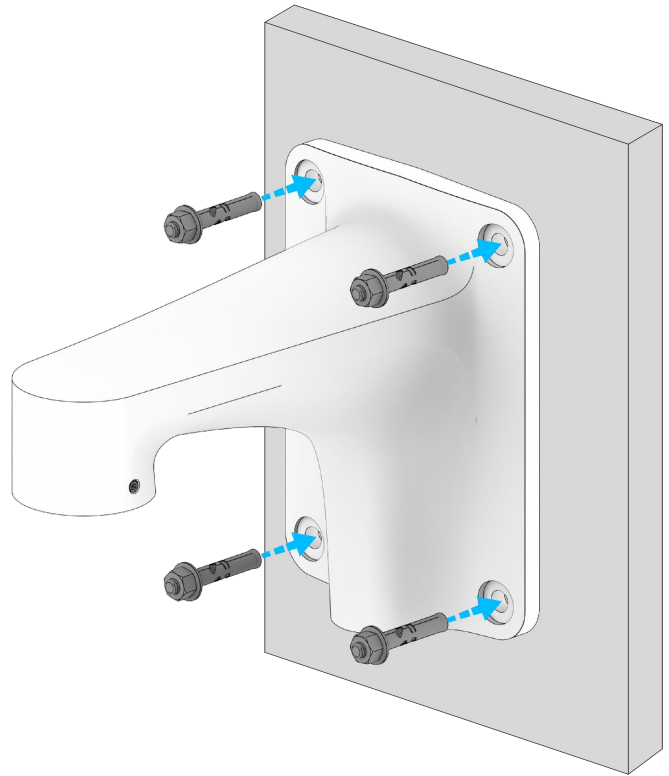
Mark the 4 pilot hole locations. Holes should be at least 4" from wall edges or corners.

Drill 5/16" pilot holes at least 2-3/4" deep using a hammer drill and impact-rated masonry bit.

After drilling, clear dust and debris from hole.

Mount by pressing the sleeve anchors into the pilot holes. Make sure the washer and nut are tight against the accessory body.

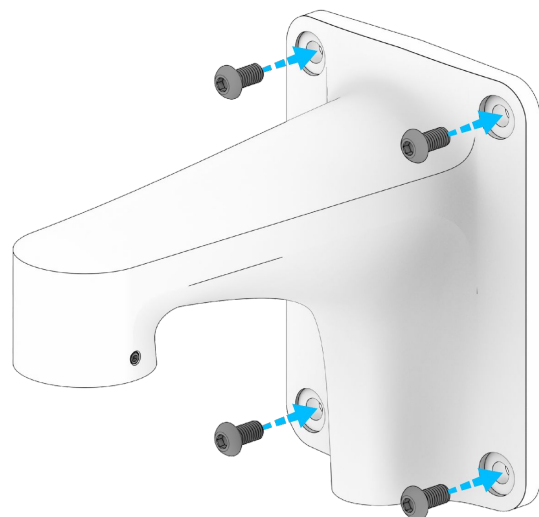
To secure, set the anchors by turning 3 to 4 full turns, using a 7/16" wrench.



For Pole or Corner Mount

Attach Large Arm Mount to hole pattern **1** of Corner Mount or Pole Mount using the included machine screws.

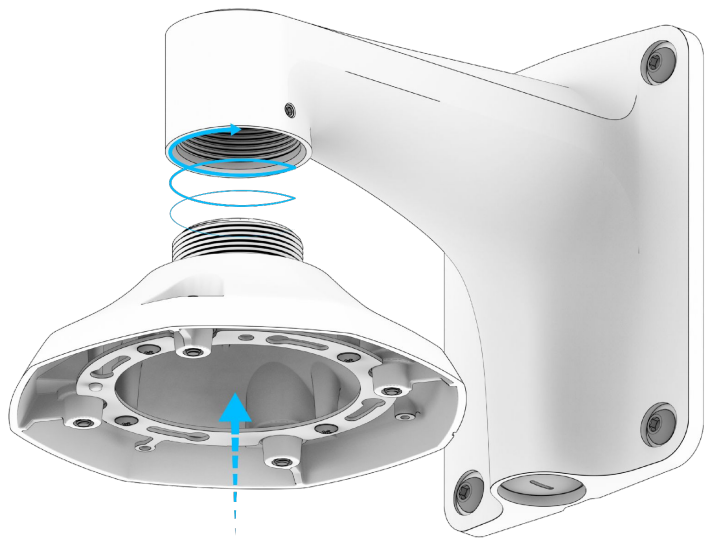
To secure, tighten the machine screws using the provided 5mm Hex key.



Mounting

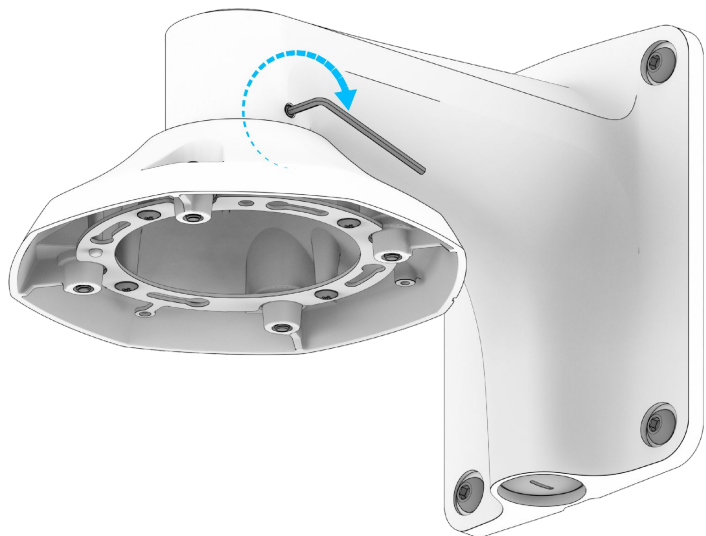
Securing device to mount

Use the internal 1.5" NPT threads to screw the Pendant Cap onto the Large Arm Mount.



After attaching the Verkada device to the mount, tighten the set screw with the provided 3mm Hex key.

Please see additional install steps for the device you are mounting in its respective Install Guide.



Appendix

Support

Thank you for purchasing this Verkada product. If for any reason you're experiencing issues or need assistance, please contact our 24/7 Technical Support Team immediately.

Sincerely,
The Verkada Team
verkada.com/support

